

Dormatec Briquetting Systems

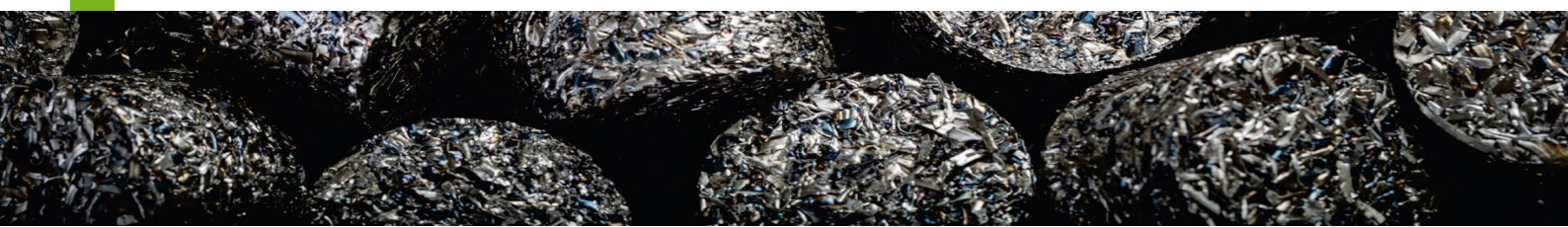


Dormatec Environment Systems

Breeuwhamer 25, 1648 HG De Goorn

| info@dormatec.eu

| www.dormatec.eu



Supercompact

TM-55-L

TM-55-L is a compact briquetting machine which encloses all components into a single chassis. It is specifically designed to serve a single machine tool, or to be positioned directly under the chips conveyor belt.

TM-55-L is designed for the compaction of steel, cast iron, aluminum, copper, brass, bronze, titanium and plastic.

TM-55-L includes sensors and controls designed for a fully automated operation.

Moreover, the frame is mounted on casters and provided with a handle, to allow the easy displacement inside the workshop to where the production needs are.



Sludgecompact



TM-45-L

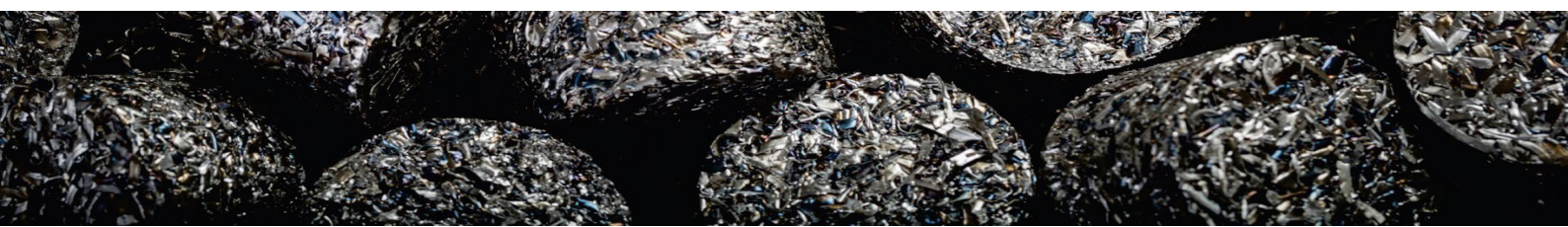
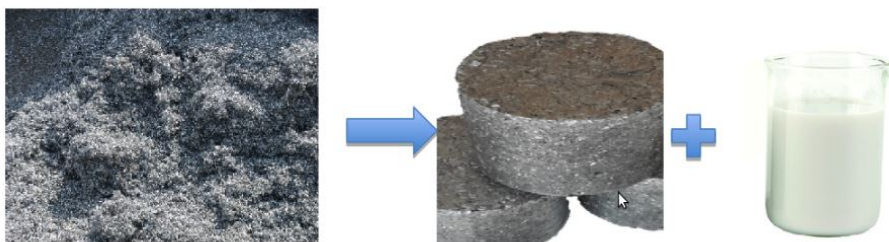
TM-45-L briquetting press is a machine specifically designed to compact grinding sludge. It adds value to the metal waste, while recovering valuable amounts of the oil or coolants used in the grinding process. TM-45-L highly efficient oil or coolant recovery system works by applying a negative pressure during compaction phase, with remarkable fluid recovery yields and the lowest possible percentage of residual oil in the final briquette. The compacted briquette is no longer considered a special waste and instead becomes raw material for smelting furnaces.



Advantages of compaction

- Up to 85% reduction of the overall volume of the scrap.
- Increase of the economic value of the scrap.
- Reduction of time in managing the scrap.
- Recovery of cutting oils and coolants from the scrap.
- Reduction of the environmental impact.
- Increase of the cleanliness of the workshop.

	TM-55-L	TM-45-L
TOTAL INSTALLED POWER	3,3 kW	3,3 kW
BRIQUETTE DIAMETER	55 mm	45 mm
CAPACITY STEEL	50-70 kg/h	-
CAPACITY ALUMINUM	30-40 kg/h	-
CAPACITY SLUDGE	-	3-30 kg/h
DIMENSIONS WxDxH mm	700x1200x1600	700x1200x1600
HOPPER VOLUME	50 liters	50 liters
OIL TANK CAPACITY	50 liters	50 liters



Ferrous Materials performance

	Material	Diameter	Height	Volume	Weight	Density	Comments
		mm	mm	dm ³	g	g/dm ³	
							Pressing pressure = 710 kg/cm ²
1	Construction steel	55.5	26.7	0.065	220	3408	Medium-small swarf size
2	Stainless steel type A	56.3	34	0.085	198	2340	Long swarf
3	Stainless steel type B	55.6	22.7	0.055	201	3649	Thin swarf
4	Grey cast iron	55.5	34	0.082	334	4063	Small swarf size
5	Dry grinding sludge	56.4	35.8	0.089	245	2741	Sludge



Non-ferrous materials performance

	Material	Diameter	Height	Volume	Weight	Density	Comments
		mm	mm	dm ³	g	g/dm ³	
							Pressing pressure = 710 kg/cm ²
6	Aluminium type A	55.2	28	0.067	136	2031	Small swarf size
7	Aluminium type B	55.5	29.3	0.071	107	1510	Medium swarf size, roughing machining
8	Titanium	56	21	0.052	107	2070	Long and thin swarf
9	Brass	56.1	23.4	0.058	246	4255	Small swarf size, with oil
10	Plastic type A	55	21.9	0.052	46	885	Polyethylene rods
11	Plastic type B	55.5	26.8	0.065	71	1096	Long and thin swarf

